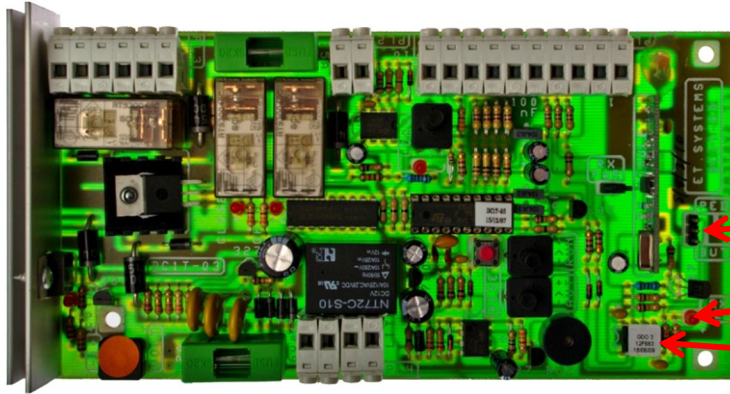


How to program a remote into your:
DC1T



RX programming pins

RX LED

Receiver IC

ET BLUE



**Compatible with both the
ET Blue and ET BLU MIX ranges of remotes**

ET BLU MIX




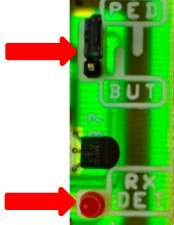
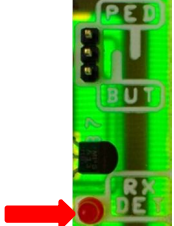
(NB. The ET BLU MIX remote button must be set to the old ET Blue code for use on this motor if the receiver IC has no © logo on it.)

Learning a remote transmitter button in the receiver for BT open/close operation: -
(25 user memory)

Action	Pictorial confirmation	Response
Press and hold the required remote transmitter button		RX LED flickers lightly.
Short circuit the middle RX programming pin to the BUT pin.		RX LED flashes Confirmation. 1 flash = First transmitter learnt. 2 flashes = Successful there is still memory available. Multiple rapid flashes = memory full.
Remove the short circuit once the RX LED flashes confirmation.		RX LED remains lit in standby.
Release remote transmitter button		

How to program a remote into your: DC1T

Learning a remote transmitter button in the receiver for the pedestrian operation: - (6 user memory)

Action	Pictorial confirmation	Response
Press and hold the required remote transmitter button		RX LED flickers lightly.
Short circuit the middle RX programming pin to the PED pin.		RX LED flashes Confirmation. 1 flash = First transmitter learnt. 2 flashes = Successful there is still memory available. Multiple rapid flashes = memory full.
Remove the short circuit once the RX LED flashes confirmation.		RX LED remains lit in standby.
Release remote transmitter button		